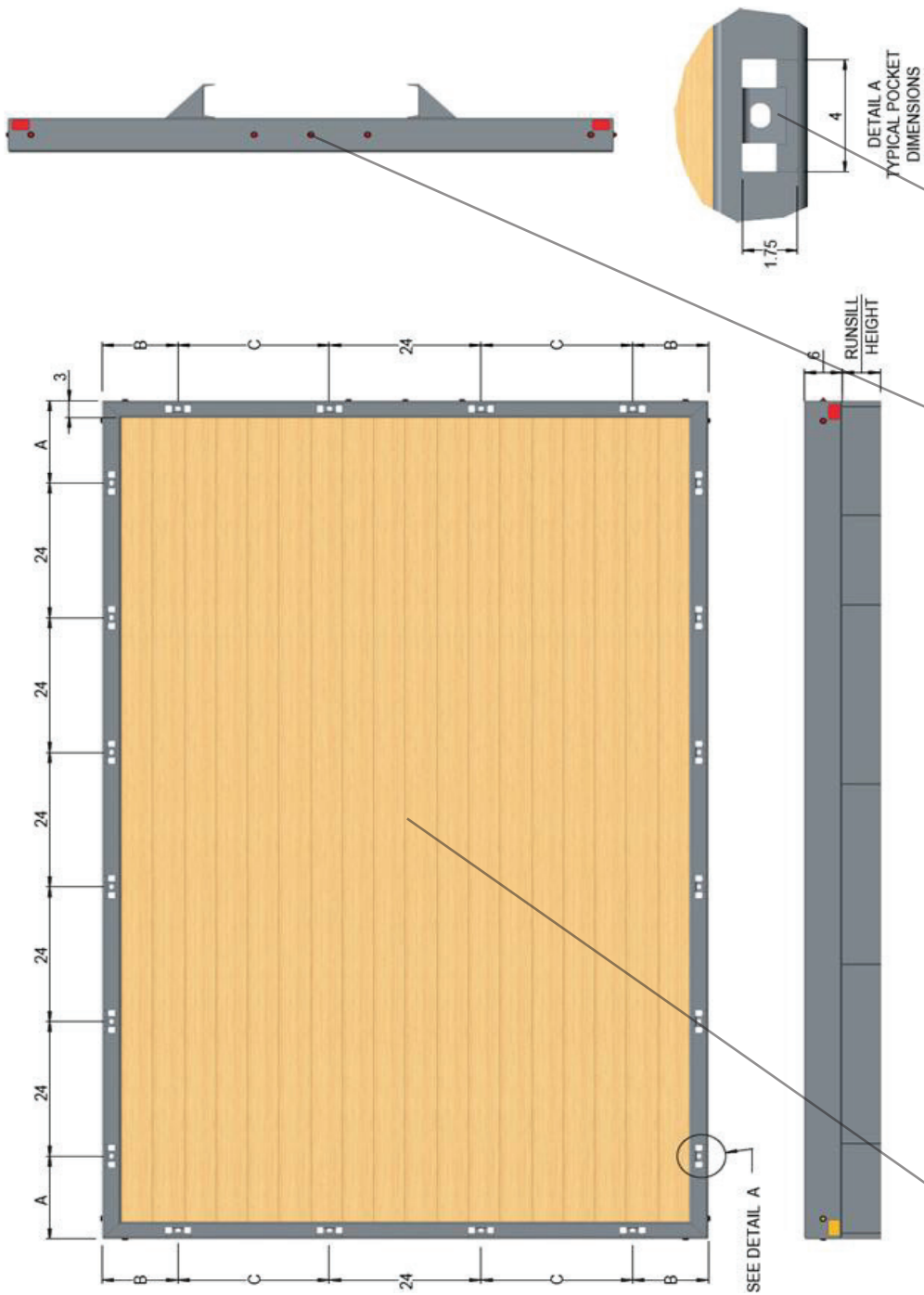


Heavy Duty PLATFORM BODY



- DIMENSIONS**
 - Lengths: 8'0", 8'6", 9'0", 9'6", 10'0", 10'6", 11'0", 11'6", 12'0", 12'6", 14'0", 14'6", 16'0", 16'6", 18'0", 18'6", 20'0", 20'6", 22'0", 22'6", 24'0", 24'6", 26'0" and 26'6".
 - Widths: 82", 96" and 102".
 - FRONT OUTRAIL**
 - 6" deep.
 - 11 ga. (.120") high strength steel.
 - Four 12 ga. (.105") 2 x 4 stake pocket reinforcement inserts sized for 2x4 boards or steel stakes.
 - Gusseted to the long members.
 - No welding to inside face of outtrail - no weld through marks on outside face to mar finish.
 - SIDE OUTRAIL**
 - 6" deep.
 - 11 ga. (.120") high strength steel.
 - 12 ga. (.105") 2 x 4 stake pocket reinforcement inserts on 24" centers. The number of pockets varies with the length of the platform. Sized for 2x4 boards or steel stakes.
 - No welding to inside face of outtrail - no weld through marks on outside face to mar finish.
 - REAR OUTRAIL**
 - 6" deep.
 - 11 ga. (.120") high strength rollformed steel.
 - Four 12 ga. (.105") 2 x 4 stake pocket reinforcement inserts. Sized for 2x4 boards or steel stakes.
 - Gusseted to the long members.
 - No welding to face of outtrail - no weld through marks on face to mar finish.
 - FLOOR AND UNDERSTRUCTURE**
 - 11 ga. (.120") high strength rollformed "C" section cross members, 4-3/16" high.
 - Cross members are located on 12" centers on platforms 14' and longer. On platforms shorter than 14', cross members are located on 16" centers.
 - 10 ga. gussets welded to first 2 cross members from the rear, and every other cross member toward the front of the platform.
 - Standard Long members:
 - 8'0" - 8'6" platforms - 5" 10ga Formed.
 - 9'0" - 10'6" platforms - C4 Structural Channel.
 - 1'0" - 14'6" platforms - C6 Structural Channel.
 - 16'0" - 20'6" platforms - C7 Structural Channel.
 - 22' 0" - 26'6" platforms - C8 Structural Channel.
 - Floor Options:
 - Wood - 2"x6" (nom.) tongue and groove joint, kiln dried, #1 dense southern yellow pine floor boards which are attached to the cross members with trailer-type torx screws.
- flooring is CCA pressure treated, forcing the preservative deep into the wood's fibers through a thorough impregnation process.
- Smooth Steel - 10 ga. (.135"), 7 ga. (.179"), or 1/4" (0.25") smooth steel (welded to cross members)
 - Treadplate Steel - 1/8" (.125"), 3/16" (.188"), or 1/4" (.25") treadplate steel (welded to cross members)
 - Treadplate or smooth steel over wood.
- LIGHTING/REFLECTORS**
 - Rubber grommet mounted; 3/4" Single Diode LED lights.
 - Two clearance lights per corner. (Amber-front) (Red-rear)
 - Three-light (identification) cluster in rear outtrail.
 - Two adhesive backed reflectors per corner. (Amber-front) (Red-Rear)
 - All lights and reflectors meet applicable federal standards (FMVSS 108).
 - Plug-in wire harness.
 - Weather-tight installation.
 - PAINT**

Black Acrylic E-Coat

Topcoat - Electrocoat Process

*All product goes through a multi-stage immersion cleaning and rinsing process to thoroughly clean all surfaces.

*The product is then immersed in a chemical bath to prep the steel for optimum zinc phosphate adhesion prior to immersion in the zinc phosphate tank.

*The zinc phosphate stage then puts a base zinc crystalline structure on the steel for superior paint adhesion.

*A subsequent sealer rinse tank seals the pretreated surface to optimize corrosion resistance.

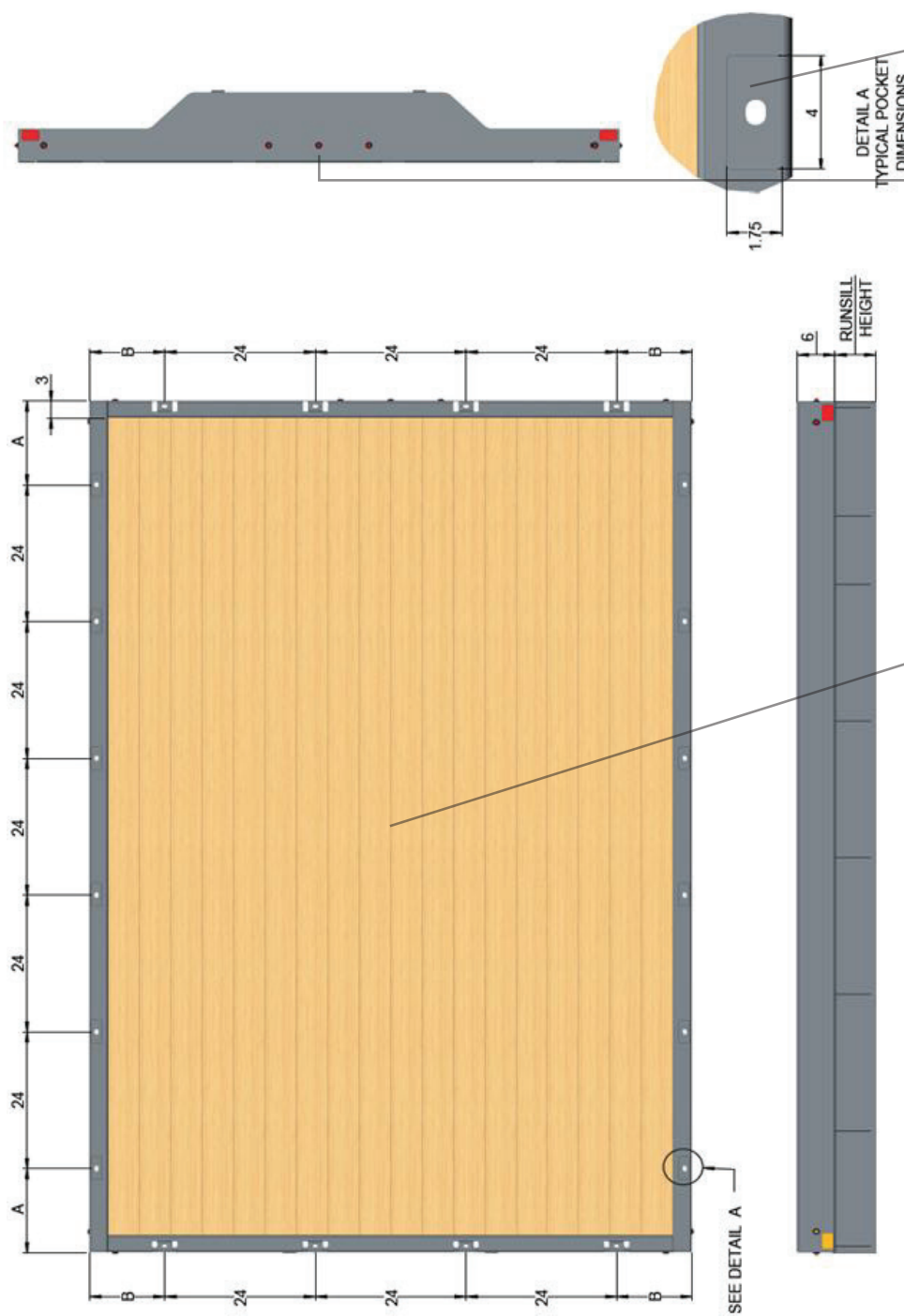
*Two reverse osmosis rinse tanks insure the product is free from mineral deposits prior to painting.

*The product is then immersed in an acrylic electro - deposition tank when a high gloss black acrylic topcoat is charged onto the product.

*After two final permeate rinse tanks remove any excess acrylic material and insure a consistent surface finish, the product is oven cured at 350 degrees to fully crosslink and cure the electrocoat topcoat providing an extremely durable and rust resistant finish.

 - Optional urethane topcoat colors.

Super Duty PLATFORM BODY



- DIMENSIONS**
 - Lengths: 12'0", 12'6", 14'0", 14'6", 16'0", 16'6", 18'0", 18'6", 20'0", 20'6", 22'0", 22'6", 24'0", 24'6", 26'0" and 26'6".
 - Widths: 96" and 102".
- FRONT OUTRAIL**
 - 6" Deep.
 - 7ga formed steel.
 - 10ga. (.135") stake pockets sized for standard 2 x 4 boards or steel stakes.
- SIDE OUTRAIL**
 - 6" deep.
 - ASTM A500 Structural tubing.
 - Stake pockets cut into tubing and sized for standard 2x4 boards - number of pockets varies with the length of the platform; pockets on 24" centers.
- REAR OUTRAIL**
 - 7 ga. formed steel buckplate with light holes
 - Four 10 ga. (.135") stake pockets sized for standard 2"x4" boards or steel stakes.
- FLOOR AND UNDERSTRUCTURE**
 - 4" structural channel cross members.
 - Cross members on 12" centers.
 - 10 ga. gussets welded to first 2 cross members from the rear, and every other cross member toward the front of the platform.
 - Standard long members:
 - 12'0" - 14'6" platforms - C6 Structural Channel
 - 16'0" - 20'6" platforms - C7 Structural Channel
 - 22'0" - 26'6" platforms - C8 Structural Channel
 - Floor options:
 - Wood - 2"x6" (nom.) tongue and groove joint, kiln dried, #1 dense southern yellow pine floor boards which are attached to the cross members with trailer-type torx screws. - flooring is CCA pressure treated, forcing the preservative deep into the wood's fibers through a thorough impregnation process.
- LIGHTING/REFLECTORS**
 - Rubber grommet mounted; 3/4" Single Diode LED lights.
 - Two clearance lights per corner. (Amber-front) (Red-rear)
 - Three-light (identification) cluster in rear buckplate.
 - Two adhesive backed reflectors per corner. (Amber-front) (Red-Rear)
 - All lights and reflectors meet applicable federal standards (FMVSS 108).
- PAINT**

Black Acrylic E-Coat

Pre-Paint Preparation and Topcoat - Electrocoat Process

*All product goes through a multi-stage immersion cleaning and rinsing process to thoroughly clean all surfaces.

*The product is then immersed in a chemical bath to prep the steel for optimum zinc phosphate adhesion prior to immersion in the zinc phosphate tank.

*The zinc phosphate stage then puts a base zinc crystalline structure on the steel for superior paint adhesion.

*A subsequent sealer rinse tank seals the pretreated surface to optimize corrosion resistance.

*Two reverse osmosis rinse tanks insure the product is free from mineral deposits prior to painting.

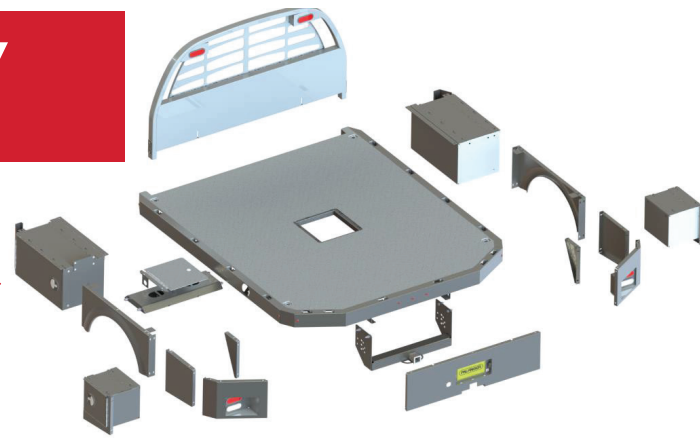
*The product is then immersed in an acrylic electro - deposition tank when a high gloss black acrylic topcoat is charged onto the product.

*After two final permeate rinse tanks remove any excess acrylic material and insure a consistent surface finish, the product is oven cured at 350 degrees to fully crosslink and cure the electrocoat topcoat providing an extremely durable and rust resistant finish.

 - Plug-in wire harness.
 - Weather-tight installation.

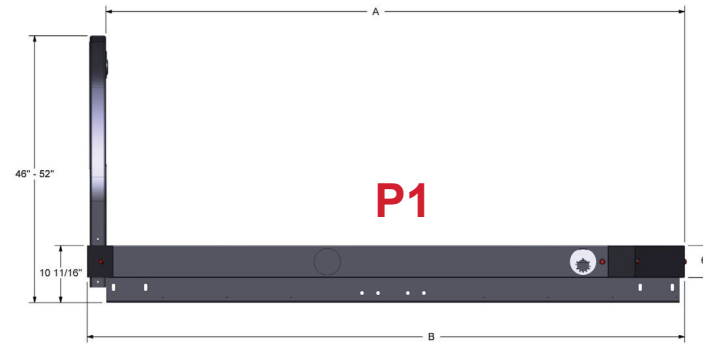
BADGER BODY

- LED body lights and wire harness factory installed.
- Fuel fill cutout installed in side rail.
- One (1) mount kit designed to comply with FMVSS-301.



P1:

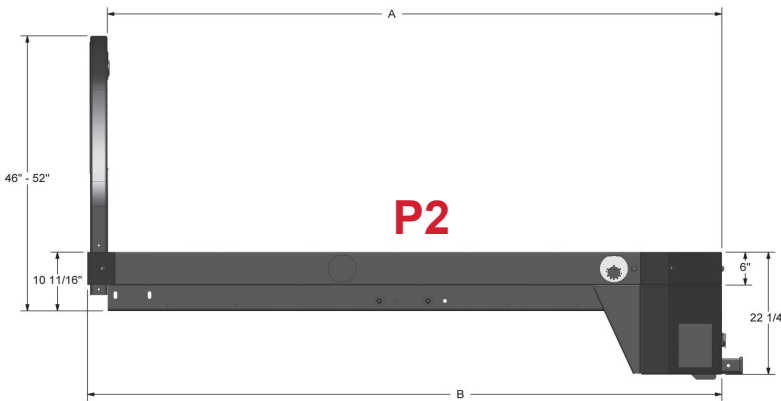
1. Factory installed adjustable bulkhead with LED stop, tail and turn lights.
2. LED body lights and wire harness factory installed.
3. Fuel fill cutout installed in side rail.
4. One (1) mount kit designed to comply with FMVSS-301.
5. Electrocoated black acrylic topcoat paint.



P2:

All of the P1 features **PLUS:**

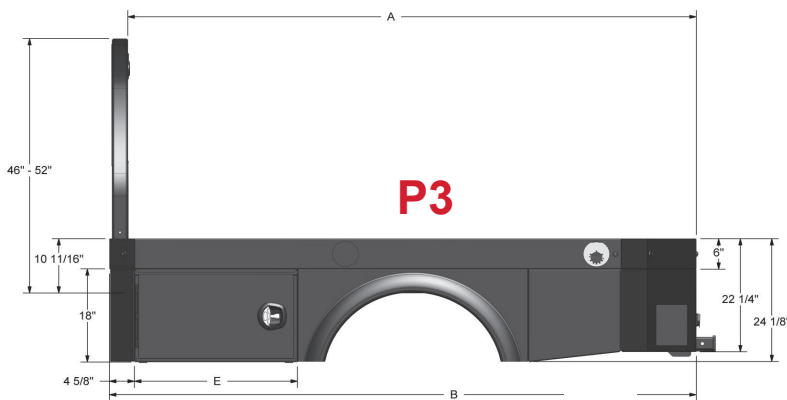
6. Factory installed gooseneck trap door; 30,000 lb gross trailer weight and a maximum 7,500 lb vertical load limit.
7. Receiver hitch rated at 12,000 lbs max gross trailer weight, 2,000 lb max tongue weight. Hitch is factory installed on 9'-4" and 11'-4" bodies and shipped uninstalled on 8'-4" bodies.



P3:

All of P1 and P2 features **PLUS:**

8. One (1) underbody toolbox installed each side of body with front hinged door.
9. Single point compression whale tail latches installed in toolboxes.
10. Automotive style adhesive backed full perimeter door seal installed.
11. Gas spring door retainers installed in toolboxes.
12. Electrocoated black acrylic topcoat paint (exterior and interior).
13. **Additional Add On:** Rear toolbox available, 16W X 14H X 14D



PALFINGER

PLATFORM & BADGER BODIES

